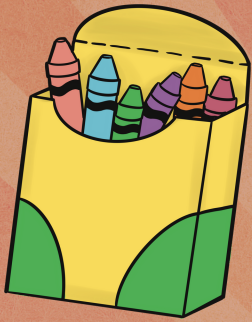


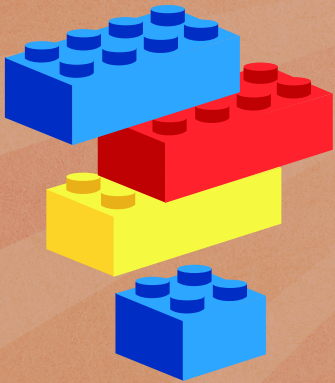
TOY HISTORY



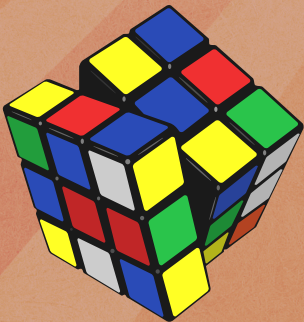
Crayola began in 1902. They made crayons to be a more kid friendly type of chalk.



The first ever Barbie doll was sold in 1959. Barbie was made because kids needed a "grown-up" doll for some of their games. Before Barbie, most dolls were babies.



Lego bricks were first sold in 1949 by the Lego Group. These bricks took five years to develop into the toys that we love today.



The Rubik's cube was invented in 1970. These puzzles are hard to solve, but some people practice so much that they can solve this puzzle in less than five minutes!

Kids have been playing with toys for a long time!

Toys are a lot of fun and can teach us important skills.

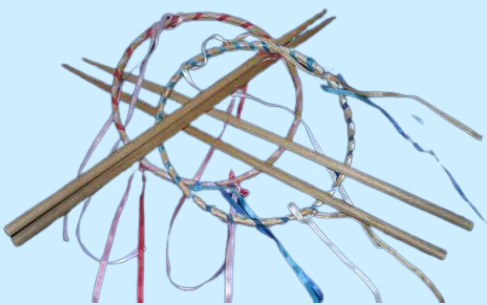
Coloring makes us creative, dolls make us care, and puzzles make us think.



TOYS OF THE PAST



Spinning Tops have been popular kids toys for a very long time. They are one of the oldest toys to exist.



Grace hoops are an old-fashioned game that comes from France. Children used to play this game to become more graceful.

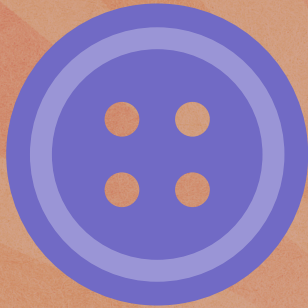


Doll houses are small houses for children to keep their dolls in and play with.

WHIRLIGIG

Children have been playing with whirligigs for hundreds of years.

Today, you get to make one for yourself!

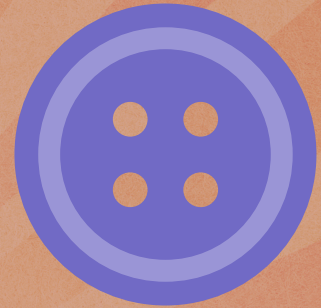


Materials:

1 button

1 piece of string

scissors



Instructions:

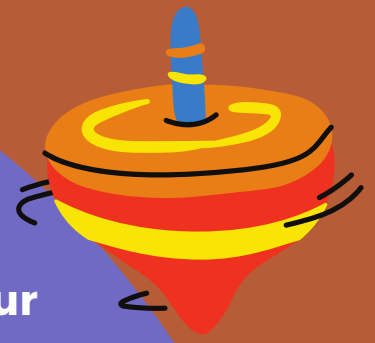
1. cut string to 36 inches
2. Thread the string through two of the buttonholes. If the button has four holes, place string through diagonal holes.
3. Tie the two loose ends of the string together into a knot.
4. Make finger loops at each end by tying another knot near the end of the string large enough for a finger.

If you are having trouble with this activity, there are plenty of tutorials on YouTube, just search "how to make a button whirligig."

Bring your whirligig to the museum to get your prize. You will be entered into the raffle for bigger prizes.



Toy Quiz



Email the words "Watkins-Toy" and your answers to cpreut@watkinsmuseum.org
Students missing only one answer or less will receive a prize and be entered into the raffle.

1. What year was the first Barbie doll sold?

- a) 1867
- b) 2002
- c) 1956

2. What kind of toy is a Rubik's Cube?

- a) a puzzle
- b) a doll
- c) a plush

3. When did children begin playing with toys?

- a) yesterday
- b) a very long time ago
- c) last year

4. What does Crayola sell?

- a) crayons
- b) dolls
- c) bubble gum

5. What is your favorite toy and why?

