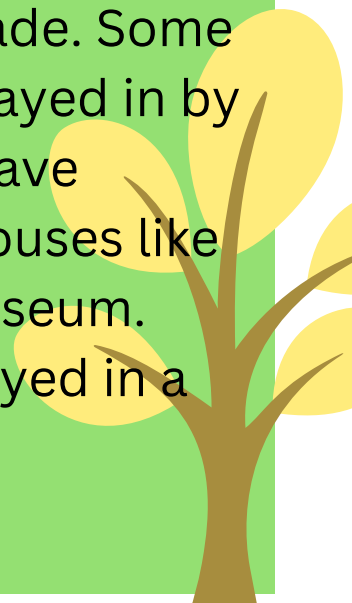


Playhouses!

Kids really like to play in playhouses. They can pretend to be big people doing big people things. They can cook, clean, and use dolls as kids!



We don't know when the first playhouse was made. Some may have been played in by the 1860's. Kids have loved to play in houses like this one in our museum. Have you ever played in a playhouse like this?



Playhouse Toys



Kids loved to play tea party with a set like this.

Child size chairs made pretend play fun!

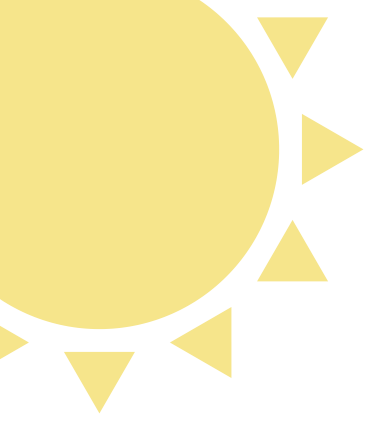


A doll would give kids a chance to play "mom and dad."

Playhouse Types

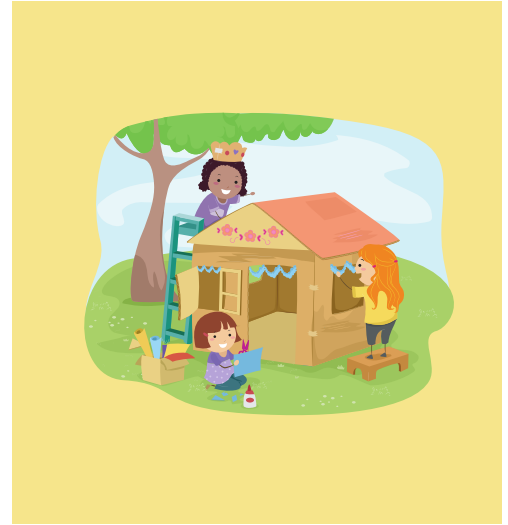


Playhouses can be made in many ways. You just need to use ideas from your mind. Sometimes making a picture of what you see in your mind can get you started.



Activity

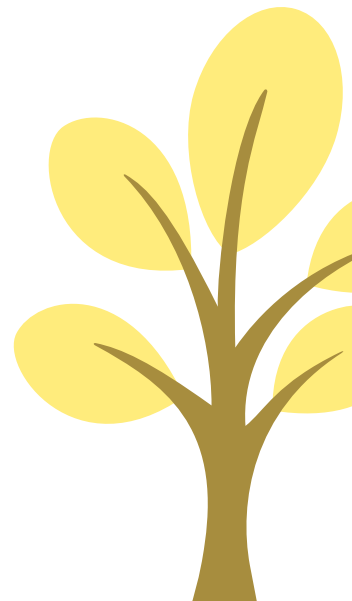
Your job is to color a playhouse that you like. You may use crayons, colored pencils, or markers.



Do your best! There is extra paper for mistakes. Put your name on the front. Bring your picture to the Watkins Museum to get your prize. Your picture may be hung in the museum for all to see!



The twins Elsa and Olga at their playhouse in Lawrence.



Playhouse Quiz for Online Users

Send the words Watkins-Playhouse and your answers to cpreut@watkinsmuseum.org

1. What twins are sitting in front of a playhouse?
 - a. Elsa and Olga
 - b. Ben and Adam
 - c. Kim and Jim
 - d. Mary and Kate
2. What do kids like to pretend in a playhouse?
 - a. They are going to the moon.
 - b. They like acting like big people.
 - c. They are on a trip in Africa.
 - d. They are playing basketball.
3. What might you find in a playhouse?
 - a. football, basketball and baseball
 - b. horse, goat and pig
 - c. boat, truck and car
 - d. chairs, dishes and dolls
4. About when did children start playing in playhouses?
 - a. 2020's
 - b. 1940's
 - c. 1860's
 - d. 1700's
5. What might you need to build a real playhouse?
 - a. glue and paper
 - b. wood, nails and hammer
 - c. crayons
 - d. video game

Students missing only one answer or less will receive a prize and be entered into the raffle.