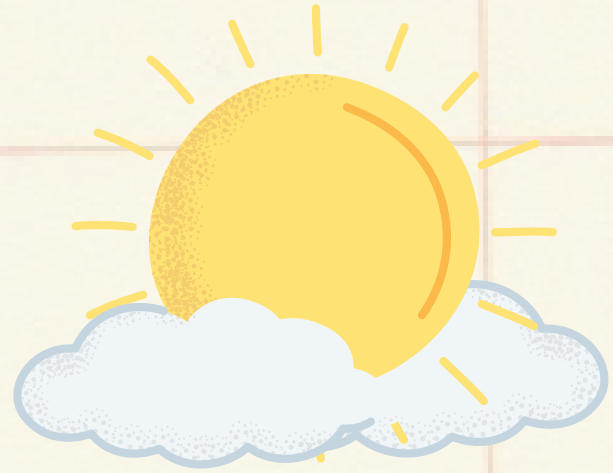


# What is gardening?



Gardening means to grow plants that are meant to be eaten or to be pretty to look at.

Gardeners usually only grow plants for themselves or for their family.

Gardeners are not the same as farmers. Farmers have a lot of land. They have animals. They grow food for lots of people.



# What can I grow in my garden?



## To Eat

## To Look At



Mint



Parsley



Tomatoes



Cucumbers



Basil



Strawberries



Garlic



Blueberries



Blackberries



Raspberries



Rosemary



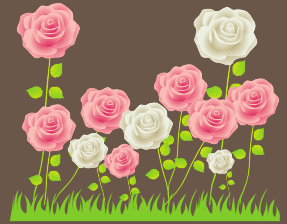
Carrots



Lettuce



Daisies



Roses



Tulips



Daffodil



Marigolds



Sunflowers



Chrysanthemums



Lavender



Hydrangeas



# Maggie's Garden

Maggie Harrington was a girl who lived during the 1860s. The museum has a garden inspired by the garden that she might have taken care of.



Thyme



Sage



Echinacea



Lavender



Tarragon

# Seed Balls

1. Roll clay into a ball.
2. Pinch the ball into a cup-like shape.
3. Fill this "cup" with dirt and seeds.
4. Close the opening.
5. Roll the clay back into a ball shape.
6. Leave the ball on a dirt area with lots of sun and water.
7. Watch as your seeds turn into flowers.

Take a picture or draw a picture of the plants that grow. Bring it to the museum for your prize. You will be entered into a raffle for bigger prizes!





# Gardening Quiz



Email the words "Watkins-Garden" and your answers to  
[cpreut@watkinsmuseum.org](mailto:cpreut@watkinsmuseum.org)

Students missing only one answer or less will receive a prize  
and be entered into the raffle.

1. Which option is an example of something that people can grow in a garden?

- a) carrots
- b) bread
- c) rabbits

2. True or False: Gardeners are different from farmers.

- a) True
- b) False

3. Which of these plants CAN NOT be found in Maggie's garden?

- a) lavender
- b) thyme
- c) sunflowers

4. What is a garden?

- a) a plot of land where people grow flowers
- b) a plot of land where people grow food for their family
- c) both answers can be correct

5. If you had a garden of your own, what would you grow in it?

