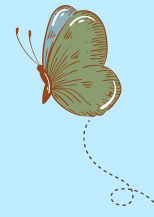


# JOIN US ON THE PRAIRIE!



# Let's Go West

## WHY DID PEOPLE GO WEST?

Some people did not have a lot of money, so they thought going west would give them new opportunities. Many people took their whole families out west! Can you imagine moving away from your home?



Well, people went West to find a new home! Going west meant that people had the chance to start their own farms. Have you ever been on a farm?

# What Did People Ride on the Prairie?

## COVERED WAGONS

People used to ride in covered wagons! These wagons had wheels so they could roll, and they could carry all of their belongings.



## OXEN

Oxen used to pull covered wagons! Because they are so big and strong, oxen can pull a lot of weight.



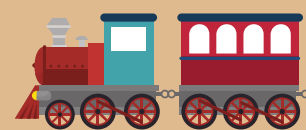
## HORSES

People often rode on horses to get quickly from one place to another. Horses can run fast, even while carrying people on their backs!



## TRAINS

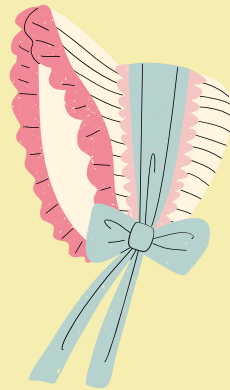
The first train tracks were being laid while people were starting to settle out west. Trains can carry people from long distances quickly!



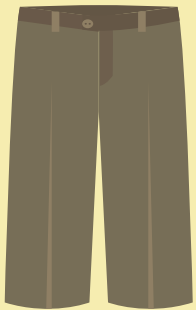
# What did people on the prairie wear?



Women often wore long, flowing dresses with dark colors. Little girls had bows and other decorations.



Women would wear bonnets on their heads to protect them from the sun.



Farmers often wore trousers while working so that they did not overheat in the sun.

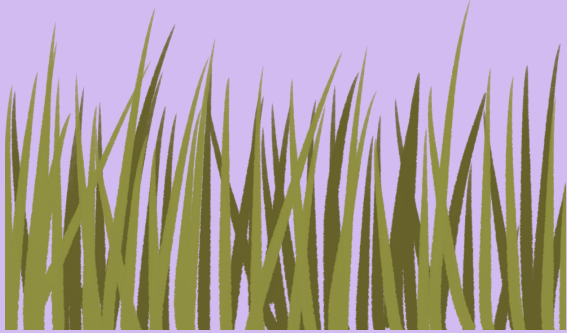


Farmers wore hard shoes like these so that they could work outside all day.



These hats were mostly worn by men and children. They also protected their eyes from the sun!

# What did people on the prairie see?



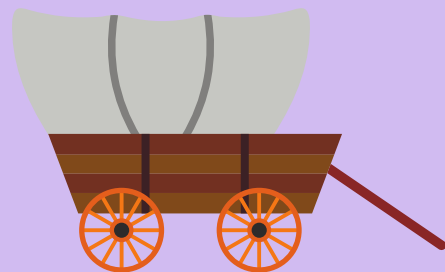
Grass! The prairie is filled with mostly flat fields of grass. There were many different types of grass, like Big Bluestem! The grass was often very tall and difficult to walk through.



Stars! Because there were no cities, it was really dark at night on the prairie. They could see a lot of stars in the darkness!



Animals! There are many different animals that call the prairie home, such as the prairie dog, the bison, and deer!



Other people! Lots of families left to travel west in the second half of the 19th century. They often traveled together for protection!

# Were the settlers the first people on the prairie?

No! A lot of different people lived or spent time on the prairie!



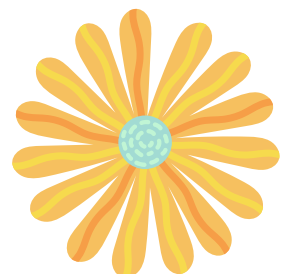
Native Americans inhabited the prairie long before settlers did!

They lived off the land, using its resources for things like food and shelter.



They also live in close-knit communities and have different customs and traditions.

Native American history is important to learn!



# INJUSTICE ON THE PLAINS

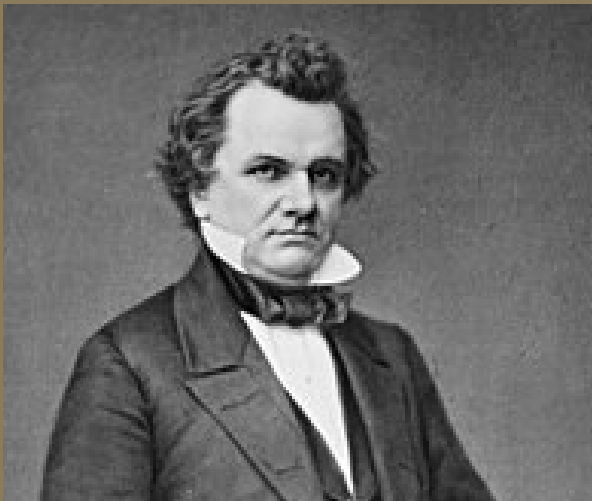
When the white settlers arrived, Native American communities were pushed off their lands.

The United States government made agreements with different Native American communities through treaties, though they often did not give them money, land, or safety that they promised.

Still, many Native American communities live in Kansas today, such as the Iowa, Kickapoo, Kansa (Kaw Nation), and Sac and Fox!

# Settlement in Lecompton, Kansas

People began settling in Lecompton, Kansas in 1854! It began as a small town, but it grew and grew as people moved west!



People were split on different issues, but one thing that people really argued about was slavery. There were many pro-slavery and anti-slavery people. Lecompton's constitution wanted Kansas to be a slave state.

Ultimately, the Lecompton constitution was not adopted. Today, Lecompton has a population around 625 people!





In order to complete this packet, please complete the following craft: a Craft Stick Log Cabin! In order to do this, please follow the instructions below:

1. Locate the craft sticks in your packet.
2. Use your craft sticks to build a log cabin!
3. Once you are happy with your cabin begin gluing the sticks together.
4. Imagine how it would feel to live in your log cabin!



# Going West! Quiz for Online Users

Send the words "Watkins-Going West" and your answers to [cpreut@watkinsmuseum.org](mailto:cpreut@watkinsmuseum.org)

Students missing only one answer or less will receive a prize and be entered into the raffle.

1. What animal was often used to pull covered wagons?
  - a. Dogs
  - b. Oxen
  - c. Zebras
  - d. Birds
  
2. What is a reason that men and women wore hats and bonnets?
  - a. Helped them smell better
  - b. Protected them from animals
  - c. Protected their eyes from the sun
  - d. Made them look really cool
  
3. Why would settlers have seen stars while going west?
  - a. No big cities
  - b. Stars did not exist
  - c. The stars were bigger
  - d. Their eyes were smaller
  
4. True or false: Settlers were the first people on the prairie?
  - a. True
  - b. False
  
5. Which animal friend would you want to travel west with you?
  - a. Owl
  - b. Cat
  - c. Bunny
  - d. Dog